

Are you  
lost?

Yes

No

**ARE YOU  
LOST?**

**YES**

**NO**



**Are you  
alone?**

**Yes**

**No**

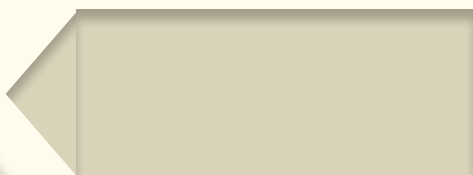


ARE YOU  
ALONE?



Yes

NO



# We know it's stressful.



Even if you like what you are doing...

**WORK IS TIRING!**

The stress and piles of work is probably making what you do less enjoyable.

BACK

CONTINUE

# We know it's stressful.

---

Even if you like what you are  
doing...

## **WORK IS TIRING!**

The stress and piles of work is  
probably making what you do less  
enjoyable.

---

< BACK

CLICK HERE TO  
CONTINUE



ARE  
YOU  
LOST?

O

X

**ARE YOU  
LOST?**



Are you  
alone?

YES

NO.

BACK

# Are you alone?

 YES

 NO





BACK

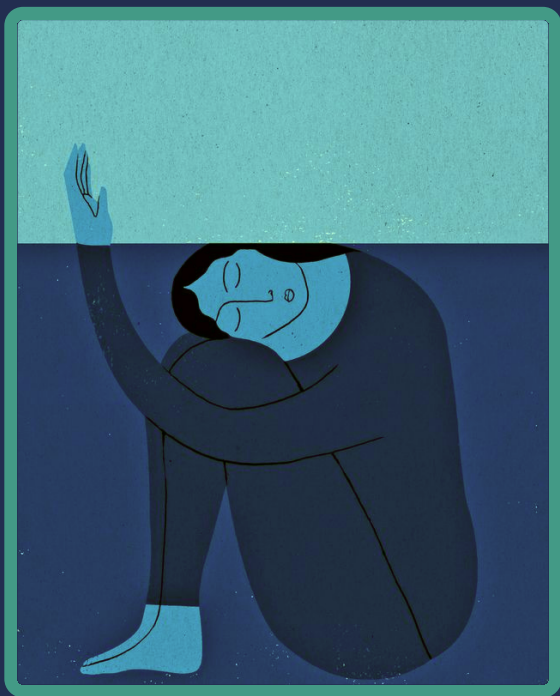
**We know  
it's  
stressful**

Even if you like what you are doing...  
**WORK IS TIRING!**  
The stress and piles of work is probably making what you do less enjoyable.

**CLICK HERE TO CONTINUE**

# We know it's stressful.

Even if you like what you are doing...  
**WORK IS TIRING!** The stress and piles of  
work is probably making what you do  
less enjoyable.



# ARE YOU LOST?

yes.

no.

**ARE  
YOU  
LOST?**

***yes.***

***no.***



ARE  
YOU  
ALONE?

<back

YES

NO

ARE YOU  
**ALONE?**

Yes

No





# WE KNOW IT'S STRESSFUL

Even if you like what you are doing...  
**WORK IS TIRING!** The stress and piles of  
work is probably making what you do  
less enjoyable.

1

2

3

4

5

6



# WE KNOW IT'S STRESSFUL



Even if you like what you are doing... **WORK IS TIRING!**  
The stress and piles of work is probably making what you do less enjoyable.





Are you  
lost?

Yes

No

ARE YOU  
LOST?

---

YES

NO

---

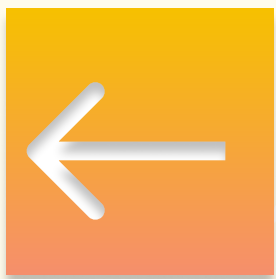
ARE  
YOU ALONE?



**YES**



**NO**

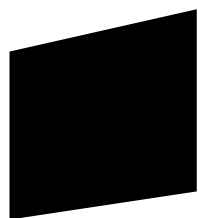


**ARE YOU  
ALONE**

**back**

**yes**

**no**



# WE KNOW IT'S STRESSFUL

Even if you like what you are doing...

**WORK IS TIRING!**

The stress and piles of work is probably making what you do less enjoyable.

**BACK** <

> **CONTINUE**

**We  
know  
it's stressful.**

Even if you like what you are doing...  
**WORK IS TIRING!** The stress and  
piles of work is probably  
making what you do  
less enjoyable.

**CONTINUE**



**BACK**

**ARE  
YOU  
LOST?**



**ARE YOU  
LOST?**



**YES**

**NO**



# ARE YOU ALONE?

YES

NO

BACK

< BACK



Y

Are you alone?

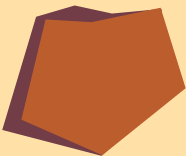
N

# WE KNOW IT'S STRESSFUL

Even if you like what you are  
doing... **WORK IS TIRING!**  
The stress and piles of work is  
probably making what you do  
less enjoyable.



**continue**



**back**



Even if you like what you are doing...  
**WORK IS TIRING!**

The stress and piles of work is probably  
making what you do less enjoyable.

we know it's  
**stressful.**



**CLICK HERE  
TO GO BACK**

**CLICK HERE  
TO CONTINUE**

**ARE  
YOU  
LOST?**

yes

no

“ARE  
YOU  
LOST?”

yes.

no.



**ARE  
YOU  
ALONE?**

**YES**

**NO**

**<<BACK**



# Are You Alone?

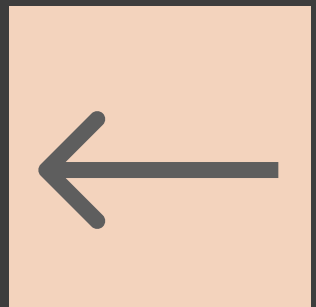
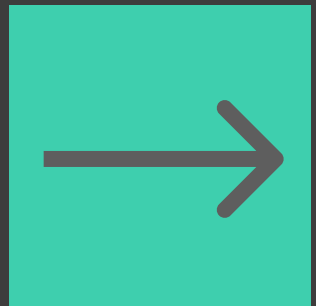
**YES**

**NO**



# We know it's stressful.

Even if you like what you are doing... **WORK IS TIRING!** The stress and piles of work is probably making what you do less enjoyable.



# We Know it's Stressful.

Even if you like what you are doing... **WORK IS TIRING!** The stress and piles of work is probably making what you do less enjoyable.

**BACK**

**NEXT**

yes

no

ARE YOU LOST?



yes.



ARE YOU  
LOST?



no.





ARE YOU  
ALONE?

YES

NO

< BACK

# ARE YOU ALONE?



yes.



no.

back

**We know it's stressful.**



# **WE KNOW IT'S STRESSFUL**

Even if you like what you  
are doing...

## **WORK IS TIRING!**

The stress and piles of work  
is probably making what  
you do less enjoyable.

**BACK**

**NEXT**



**ARE YOU  
LOST?**

*yes.*

*no.*

Yes

No

ARE  
YOU  
LOST?

**ARE YOU  
ALONE?**

**YES**

**NO**

**BACK**

**ARE YOU  
ALONE?**

**yes**

**no**

**BACK**

BACK

NEXT

Even if you like  
what you are  
doing...

**WORK IS  
TIRING!**

The stress and  
piles of work is  
probably  
making  
what you do  
less  
enjoyable.

We  
Know it's  
Stressful

# **WE KNOW IT'S STRESSFUL**

Even if you like what you are doing... **WORK IS TIRING!** The stress and piles of work is probably making what you do less enjoyable.

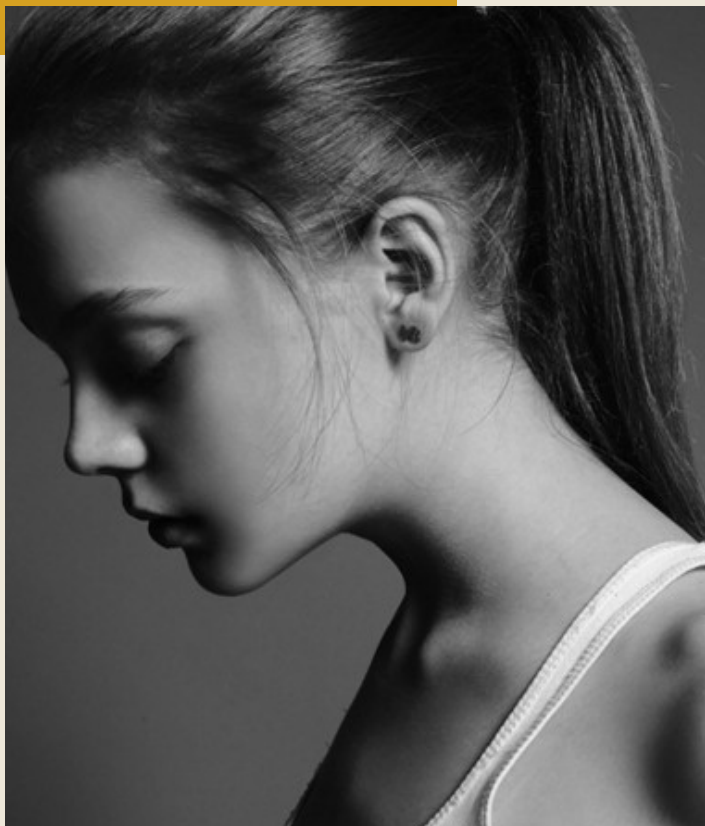


ARE  
YOU  
LOST?

YES

NO

ARE YOU  
LOST?



yes.

no.



# ARE YOU

# ALONE?

YES

NO



# ARE YOU ALONE?

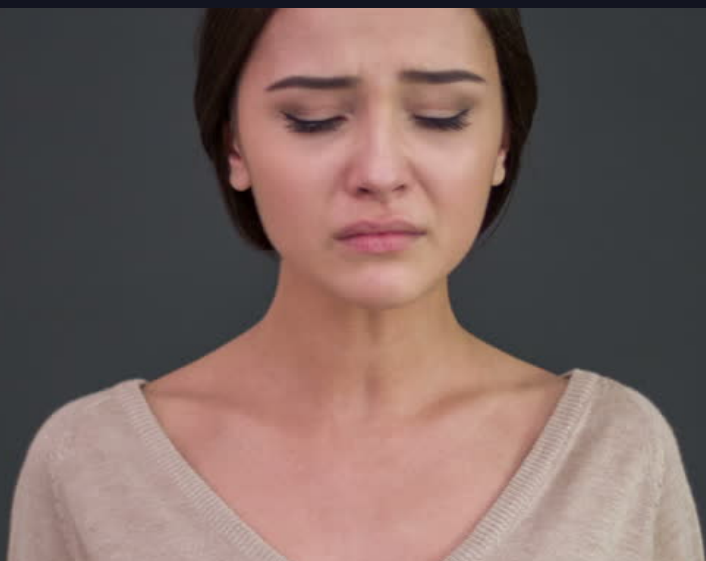


YES.

NO.

back

# We know it's stressful.



Even if you like what you are doing... **WORK IS TIRING!**  
The stress and piles of work is probably making what you do less enjoyable.

**BACK**

**CONTINUE**



We know  
it's  
stressful.

Even if you like what you are doing... **WORK IS TIRING!**  
The stress and piles of work is probably making what you do less enjoyable.

[click here to continue](#)

[back](#)

ARE  
YOU  
LOST?

YES

NO

ARE YOU  
LOST?

yes.

no.

# Are you Alone?



**Y**

**N**



**ARE YOU  
ALONE?**

**YES**

**NO**

**BACK**



# WE KNOW IT'S STRESSFUL

Even if you like what  
you are doing... WORK  
IS TIRING!

The stress and piles of  
work is probably  
making what you do  
less enjoyable.

[Click here to continue](#)

BACK

# WE KNOW

Even if you like what you are doing... WORK IS TIRING!

The stress and piles of work is probably making what you do less enjoyable.

